

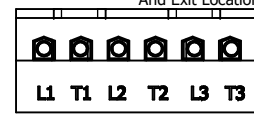
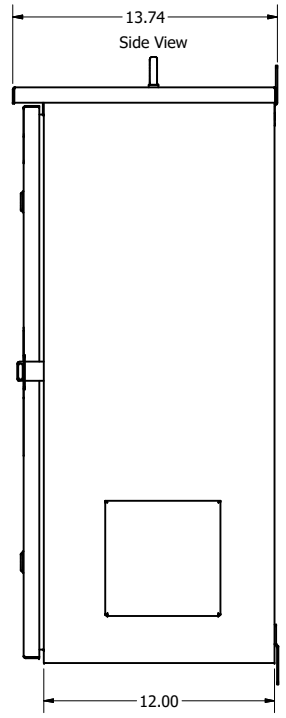
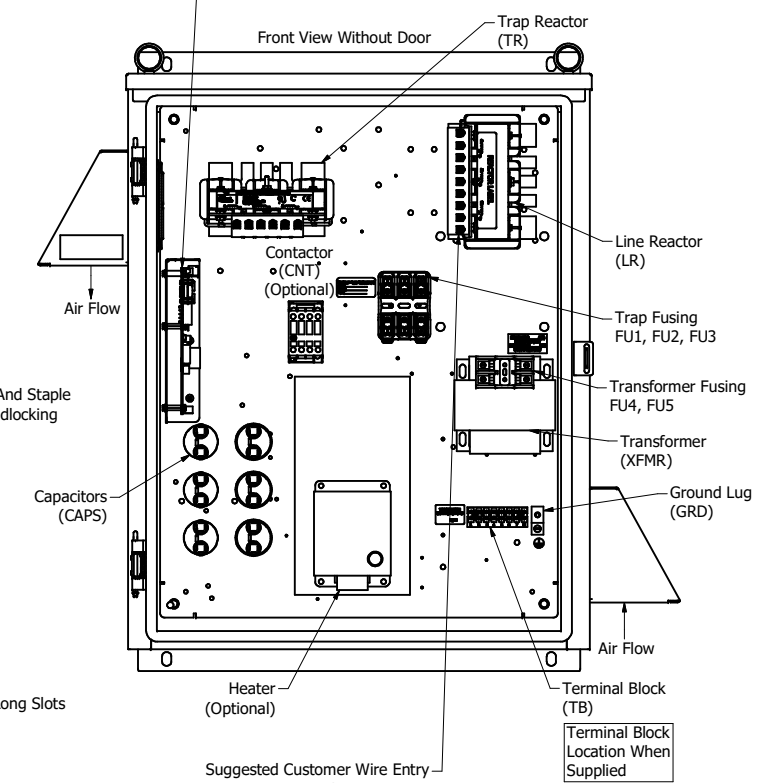
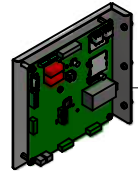
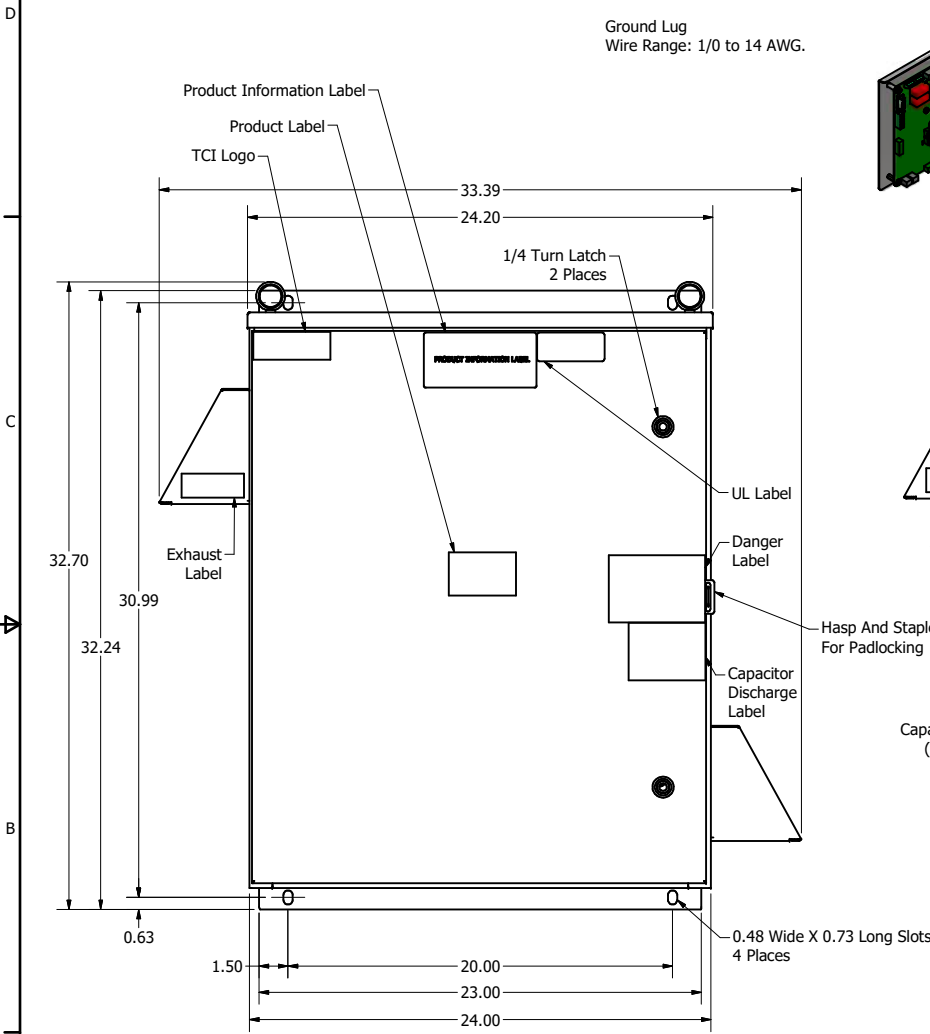
HGP Part Number	HorsePower (HP)	kVar	Harmonic	Voltage (V)	HZ.	Phase
HGP0010CW3----	10	3.1	5th	600	60	3

Note: For Torque Information See IOM Manual

Customer Connections.  
L1, T1, L2, T2, L3, T3  
Wire Range: 1 AWG to 22 AWG.

Ground Lug  
Wire Range: 1/0 to 14 AWG.

HGP Part Number	Schematic Drawing #	Approx Weight (LBS)
HGP0010CW3S0000	31663-3	120
HGP0010CW3C0000	31663-4	116
HGP0010CW3C000H	31663-5	120
HGP0010CW3S1000	31663-PQ1	118
HGP0010CW3C1000	31663-PQ	119
HGP0010CW3C100H	31663-PQH	123



Components	HGP0010CW3----					
	S0000	C0000	C000H	S1000	C1000	C100H
Line Reactor (LR)	x	x	x	X	X	X
Trap Reactor (TR)	x	x	x	X	X	X
Capacitor (Cap)	x	x	x	X	X	X
Trap Fusing, FU1, FU2, FU3	x	x	x	X	X	X
Contactors (CNT)		x	x		X	X
Transformer (XFMR)	x	x	x	X	X	X
XFMR Fusing, FU4, FU5	x	x	x	X	X	X
Heater			x			X
PQConnect Board				X	X	X

NOTE: USE ONLY HUBS OR FITTINGS THAT COMPLY WITH UL514B FOR TYPE 3R ENCLOSURES

TCI, LLC CLAIMS PROPRIETARY RIGHTS IN THE MATERIAL HEREIN DISCLOSED. IT IS SUPPLIED WITHOUT PREJUDICE TO ANY PATENT RIGHTS OF TCI AND MAY NOT BE REPRODUCED OR USED TO MANUFACTURE ANYTHING SHOWN THEREIN WITHOUT WRITTEN PERMISSION FROM TCI.

				TOLERANCES (EXCEPT AS NOTED)	
				DECIMAL	
				.XX	± .25
				.XXX	± .10
				FRACTIONAL	
				± 1/16	
				ANGULAR	
				± 1°	

Customer Is Responsible For Installation to Meet All National And Local Electrical Codes. Material(s) Shall be RoHS Compliant

W132 N10611 Grant Drive  
Germantown, WI 53022

**TCI** HarmonicGuard Passive  
HGP, 10HP, 30HP, 600/3/60, Type 3R

DESIGNED BY	JHM	DATE	07/02/19	REVISED BY	JHM	DATE	07/02/19	SCALE	1/5	DRWG NO.	108188DG	SHEET	1 OF 1
-------------	-----	------	----------	------------	-----	------	----------	-------	-----	----------	----------	-------	--------